



INTERNATIONAL ETHELLES CLASS 2016 Open European Championship

28 to 30 August 2016

Cowes, Isle of Wight, England

The Organising Authority is the Royal London Yacht Club
in conjunction with the Cowes Etchells Fleet

REGATTA OFFICIALS

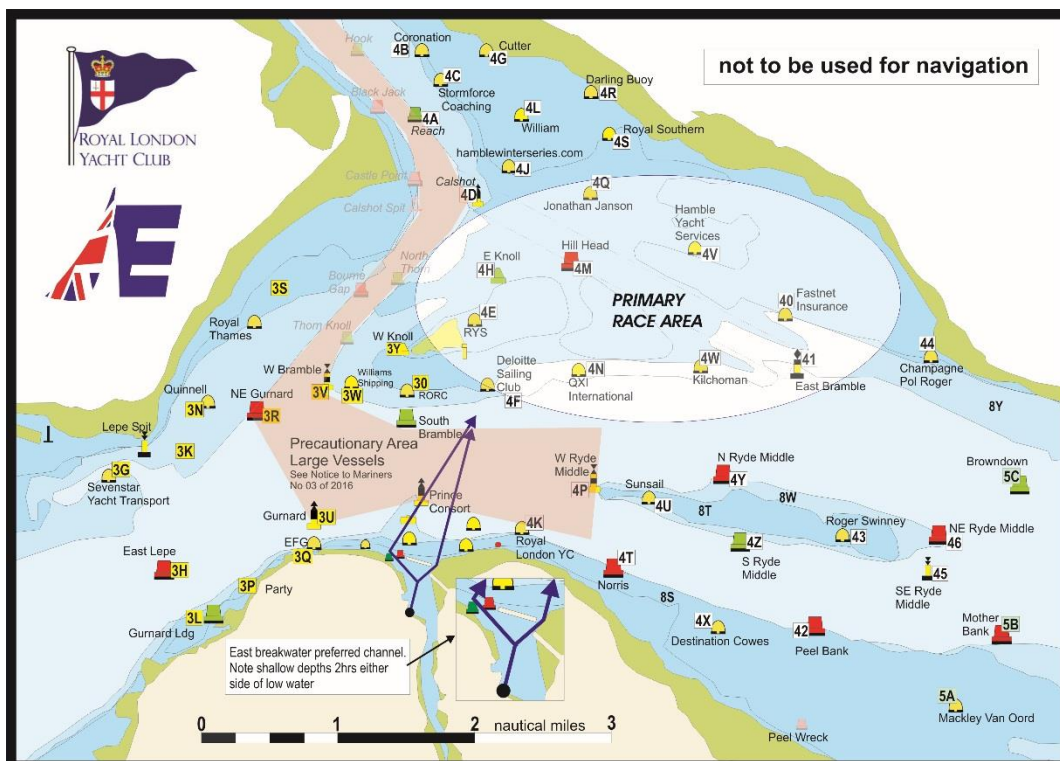
Regatta Director: David Franks

Event Organiser: Peter Taylor MBE, Chairman

Race Committee: Phil Lawrence, Course Race Officer

Protest Committee: Tom Rinda, USA Chairman

Jamie Clark GBR, Penny Carter GBR





**INTERNATIONAL ETHELLES CLASS
2016 Open European
Championship**



SAILING INSTRUCTIONS

1. RULES

1.1 The regatta will be governed by the 'rules' as defined in the current Racing Rules of Sailing (RRS).

2. NOTICES TO COMPETITORS

2.1 Notices to competitors will be posted on the official notice board located on the side of the Etchells container at the Cowes Yacht Haven.

2.2 VHF channel 72 will be used for radio communication. See SIs 8, 11.4, 18.5, 23.2 and 26.2.

3. CHANGES TO SAILING INSTRUCTIONS

3.1 Any change to the sailing instructions will be posted before 0900 on the day it will take effect, except that any change to the schedule of races will be posted by 2000 on the day before it will take effect.

4. SIGNALS MADE ASHORE

4.1 Signals made ashore will be displayed at the Cowes Yacht Haven.

4.2 When flag AP is displayed ashore, '1 minute' is replaced with 'not less than 45 minutes' in race signal AP. This changes RRS Race Signals.

4.3 When flag Y is displayed ashore or afloat, rule 40 applies at all times whilst afloat. This changes RRS Part 4 preamble.

5. REGISTRATION

5.1 Registration, crew weigh-in and sail nomination as detailed in the notice of race are required to be completed by 0830 on Monday 29 August 2016.

5.2 The organising authority will supply and affix Bow Sticker numbers before racing which may not be removed or moved. It is the responsibility of competitors to ensure that these are in place before leaving the dock each day.

5.3 The organising authority will require all participating boats to display the event sponsor's advertising logo. The sponsor's logo shall be affixed to both sides of the hull with the aft edge in line with the front of the chain plate.

6. SCHEDULE OF RACES

6.1 Racing and associated events are scheduled as follows:

Date	HW	Time	Event	Location
Sunday 28 August	0851 4.1m	0830 1100 1730 – 1930	Coaching event - Skippers briefing Coaching Event - First Warning Signal Registration, crew weigh-in and sail nomination (see SI 21)	Regatta Venue Central Solent Race Area Regatta Office
Monday 29 August Race Day 1	1001 4.2m	0730-0830 0830 1030	Registration, crew weigh-in and sail nomination (see SI 21) Skippers briefing First Warning Signal	Regatta Office Regatta Venue Central Solent Race Area
Tuesday 30 August Race Day 2	1058 4.4m	1030	First Warning Signal	Central Solent Race Area

- 6.2 The sailing instructions for the Coaching Event on the 28 August will be published separately.
- 6.3 For the European Championship on the 29 and 30 August five races are scheduled and more than three races may be sailed on any race day.
- 6.4 When more than one race will be held on the same day, the warning signal for each succeeding race will be made as soon as practicable. To alert boats that another race will begin soon, AP will be displayed at the finish of the previous race.

7. CLASS FLAG

- 7.1 The class flag will be the Etchells class insignia on a white background or IC Flag E.

8. RACING AREA

- 8.1 Racing will take place in the area indicated in the notice of race and page 1 of these sailing instructions. The race committee will broadcast at around 0930 on VHF channel 72 the two-digit code of a fixed mark near to the intended starting area.

9. THE COURSE

- 9.1 The diagrams in Appendix 1 show the course configuration, including the order in which marks are to be passed, and the side on which each mark is to be left. The length of the windward legs will be up to approximately 2 nm.
- 9.2 The course to be sailed will be designated by displaying numeral pennant 1 or 2 from the race committee vessel no later than the warning signal.
- 9.3 The race committee vessel may display the approximate compass bearing from the starting line to mark 1.

10. MARKS

- 10.1 Marks 1, 2, 3P and 3S will be orange inflated rectangular.
- 10.2 New marks, as provided in SI 12.1, will be black inflated triangular.
- 10.3 The centre-line indicator buoy, if laid, will be an orange inflated buoy.

11. THE START

- 11.1 The starting line is between the staffs displaying orange flags on race committee vessels at each end of the starting line. A centre-line indicator buoy may be laid. This buoy is not a mark of the course and has no status.
- 11.2 A boat starting later than 10 minutes after the starting signal will be scored DNS. This changes rules 63.1, A4.1 and A.5.
- 11.3 Starting Penalty: If flag U has been displayed as the preparatory signal, no part of a boat's hull, crew or equipment shall be in the triangle formed by the ends of the starting line and the first mark during the last minute before her starting signal. If a boat breaks this rule and is identified, she shall be disqualified without a hearing but not if the race is restarted or re-sailed or postponed or abandoned after the starting signal. This changes rules 26 and 63.1. When flag U is used as the preparatory signal, rule 29.1 does not apply. The scoring abbreviation for a flag U penalty is UFD. This adds to A11.
- 11.4 The race committee will attempt to broadcast OCS, UFD and BFD boats using the bow or sail numbers by radio on VHF channel 72. Failure of equipment, failure to hear or any delay to broadcast or the order of the bow or sail numbers broadcast shall not be grounds for redress. This changes rule 62.1(a).
- 11.5 A race committee boat stationed near mark 1 may display the bow numbers of boats that have violated SI 11.3 or rule 30.3. Other race committee boats may also be used on the first windward leg for such display or hail. Boats identified under this instruction shall promptly leave the race course and not interfere with boats still racing.

12. CHANGE OF THE NEXT LEG OF THE COURSE

- 12.1 To change the next leg of the course, the race committee will lay a new mark (or move the finishing line) and remove the original mark as soon as practicable. When in a subsequent change a new mark is replaced, it will be replaced by an original mark. The change will be signalled before the leading boat has begun the leg, although the mark (or finishing line) may not yet be in the new position.

13. THE FINISH

- 13.1 The finishing line will be between staffs displaying orange flags on the race committee vessels at each end of the line *OR* between a staff displaying an orange flag on the committee vessel and a laid inflatable mark at the other end of the line.

14. PENALTY SYSTEM

- 14.1 The penalty for breaking a rule of Part 2 and rule 31 shall be a One Turn Penalty (one tack and one gybe in the same direction) except that for infringements of a rule of Part 2 occurring within the zone as defined in the current RRS the penalty shall be a Two Turns Penalty (two tacks and two gybes in the same direction). This changes rules 44.1 and 44.2.
- 14.2 A boat that has taken a penalty or retired under rule 44.1 shall complete an acknowledgement form at the regatta office within the protest time limit.

15. TIME LIMITS

- 15.1 The time limit for course 1 will be 3 hours from the starting signal and for course 2 will be 2 hours from the starting signal.
- 15.2 If no boat has passed the first windward mark within 60 minutes of the starting signal, the race shall be abandoned.
- 15.3 Boats failing to finish within 20 minutes after the first boat sails the course and finishes will be scored DNF. This changes rules 35, A4.1 and A5.

16. PROTESTS AND REQUESTS FOR REDRESS

- 16.1 Protest forms are available at the regatta office. Protests shall be delivered there within 90 minutes of the last boat to finish the last race of the day. This time will be posted on the official notice board. This changes rules 61.3 and 62.2.
- 16.2 Notices will be posted within 30 minutes of the protest time limit to inform competitors of hearings in which they are parties or named as witnesses. Hearings will be held at the Cowes Yacht Haven from Sunday 4 September.
- 16.3 Notices of protests by the race committee or the protest committee will be posted within the protest time limit on the official notice board to inform boats under rule 61.1(b).
- 16.4 Prior to a hearing and with the permission of the protest committee, a boat that has broken a rule of Part 2 of the RRS and has not complied with the requirements of rules 31 or 44.1, may accept a 30% place penalty, calculated on the number of boats entered rounded to the nearest whole number (rounding 0.5 upwards), except that she shall not be scored worse than DNF.
- 16.5 For infringements of the rules other than Part 2 and rule 31, the protest committee may award a lesser penalty than DSQ.
- 16.6 For the purpose of rule 64.3(b) the 'authority responsible' is the class international governing committee.
- 16.7 Breaches of SIs 4.3, 5.2, 5.3, 14.2, 18, 19, 23, 24 and 25 and rule 55 will not be grounds for protest by a boat. This changes rule 60.1(a). Penalties for these breaches may be less than disqualification if the protest committee so decides.

16.8 On the last day of the regatta:

- (a) a request for reopening a hearing shall be delivered within the protest time limit if the party requesting reopening was informed of the decision on the previous day;
- (b) a request for reopening a hearing held on the last day shall be delivered no later than 30 minutes after the party requesting reopening was informed of the decision on that day;
- (c) the time limit to request redress based upon an action or omission of the race committee or protest committee shall be 30 minutes after the final results are posted. This changes rules 62 and 66.

17. SCORING

17.1 Four races are required to be completed to constitute a series.

17.2 When five races have been completed one discard shall be applied. This changes rule A2.

18. SAFETY REGULATIONS

18.1 When leaving and entering Cowes harbour boats shall not sail through the moorings unless safety dictates. (See Appendix 2).

18.2 All boats shall observe the ABP byelaw the 'Moving Prohibited Zone' (see Appendix 3) and ABP Notice to Mariners No. 03 of 2016.

18.3 Boats shall keep a good look out for commercial traffic and give way to all such vessels.

18.4 All boats shall sail on starboard tack close to the stern of the committee boat and hail their sail number prior to the start of the first race each day.

18.5 A boat that retires from a race shall notify the race committee as soon as possible on VHF channel 72 or by hailing an official regatta support boat/rib.

19. REPLACEMENT OF CREW OR EQUIPMENT

19.1 Substitution of crew will not be allowed without prior written approval of the protest committee, and such requests shall be submitted to the race committee for verification of eligibility and crew weight of the substitute crew.

19.2 After measurement until completion of racing, no boat, sail or any item of measured equipment shall leave the venue without being posted on the official equipment sign-out sheet on the official notice board. It is the sole responsibility of each skipper to ensure proper recording.

19.3 After measurement until completion of racing, no sail shall be recut or altered. Repairs to sails pursuant to all applicable rules are permissible only upon written approval of the protest committee. All such sails may be subject to re-measurement on completion of repairs.

20. EQUIPMENT AND MEASUREMENT CHECKS

20.1 A boat or equipment may be inspected at any time for compliance with the class rules and sailing instructions which may include rule 43 and class rules C.2.2 and C.3.2.

20.2 On the water, a boat can be instructed by the race committee or the protest committee to proceed immediately to a designated area for inspection.

21. CREW WEIGHING

21.1 Each skipper and crew member of each boat shall be weighed together prior to racing on Monday 29 August 2016 (there is no weigh in requirement for the Coaching Event on Sunday 28 August 2016). Weigh in will take place between 1730 and 1930 on Sunday 28 August 2016 and between 0730 and 0830 on Monday 29 August 2016 at the Regatta Office.

21.2 The total combined weight of crew members for each boat will be posted on the Official Notice Board.

21.3 Crews that fail to be weighed by the designated time or fail to make the weight limit (two hundred and eighty five (285) kilos) by the designated time shall be scored DNS for all subsequent races until such time as they comply with Class Rule C.2.2. The race committee may approve an extension of time in

extenuating circumstances, and such requests are to be submitted to the race committee.

21.4 Crew substitutions shall not be permitted for the purpose making the weight limit.

21.5 Weighing scales will be available on each race day in the race office from 0830 to 0930 and from 1700 to 1800.

22. OFFICIAL BOATS

22.1 Race committee boats will display 'RC' flags.

23. COACH AND SUPPORT BOATS

23.1 Coach and support boats must be registered with the organising authority prior to acting as a coach or support boat and shall display identifying flags, issued by the organising authority, and provide their own their national sail letters to display on the engine cover at all times while they are acting as a coach or support boat.

23.2 All registered coach and support boats will carry on board and operate while on the water a VHF radio capable of transmitting and receiving on VHF channel 72 and agree to assist the race committee if directed to do so.

23.3 Competitors shall have no communication with, and boats shall not be tied to, coach or support boats from the first warning signal (or any other time the organising authority considers appropriate) of the day until racing has been concluded for the day. Between races, coach and support boats shall not approach, communicate with or transfer provisions or equipment to or from their supported boats unless in a medical or emergency threatening the health of the crew or the flotation of the boat and only with the expressed permission of the protest committee or the race committee.

23.4 Registered coach and support boats and their personnel shall stay at least 100 metres below the starting line and its extensions from the time of the preparatory signal until five minutes after the start of any race. After this time, coach and support boats may then proceed parallel to the course on the starboard side of the course facing the wind at a distance of at least 100 metres outside areas where boats are racing. Coach and support boats shall not go above the weather marks or the course 1 finishing line or below the leeward marks or the course 2 finishing line at any other time while boats are racing.

23.5 Coach and support boats shall, when requested by the race committee, tow or assist boats not associated with them. Coach and support boats are to monitor VHF channel 72 and shall follow all instructions from the race committee.

23.6 Any breach of SIs 23.1, 23.2, 23.3, 23.4 or 23.5 by a coach or support boat may result in a penalty being applied to any or all boats serviced by that coach or support boat. The penalty may be disqualification or some other penalty as determined by the protest committee.

24. HAUL-OUT RESTRICTIONS

24.1 All boats shall be afloat before 1700 on Saturday 27 August and shall not be hauled out during the championship except with and according to the terms of prior written permission of the protest committee. The penalty may be DSQ for any subsequent races.

25. PLASTIC POOLS AND BREATHING APPARATUS

25.1 Plastic pools or their equivalent shall not be used around competing yachts between the close of registration and the end of the championship.

25.2 The use of breathing apparatus, including snorkels, is not allowed from 1700 on Saturday 27 August 2016 until after the last race of the regatta. Any swimmer must be accompanied by a watcher close by.

26. RADIO COMMUNICATION

26.1 This supplements but does not change rules 2 and 41 for the IECA. All boats must carry a marine band VHF receiver capable of receiving normal international channels. Boats shall use the radio to report retirement from racing and may use the radio to request assistance in an emergency. No other

transmissions are permitted by competing yachts during each racing day from the first warning signal until the end of the last race of the day.

- 26.2 The race committee may use VHF channel 72 to provide competitors with race information.
- 26.3 The use of mobile/cell phones or any device capable of sending and/or receiving external electronic communication and/or connecting to the internet is prohibited after the first warning signal (or any other time considered appropriate by the organising authority) on each race day until the boat has completed its days racing, except as provided in SI 26.1 or in an emergency threatening the safety of any member of the crew or the flotation of the boat and only with the express permission of the protest committee or the race committee.

27. TRACKING

- 27.1 An electronic tracking system will be used to track the position of boats during the race and competitors shall allow the installation of tracking devices on their boats. The organising authority may use the information received from the system for media coverage of the racing as well as for technical and safety purposes. Competitors shall be responsible for the devices whilst on board and shall return them to the regatta office when required. On registration competitors will be required to give a credit card number from which account the organising authority may charge the sum of GBP 150 if the device is not returned. Tracking information may not be used to support a request for redress regarding OCS.

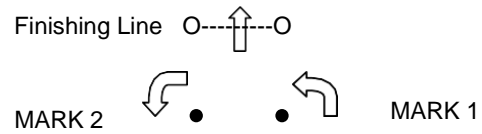
28. WAIVER OF LIABILITY

- 28.1 Competitors participate in the regatta entirely at their own risk. See rule 4 Decision to Race and NOR 20. The organising authority will not accept any liability for material damage, personal injury or any fatality sustained in conjunction with or prior to, during or after the championship.
- 28.2 All boats competing are required to carry valid third party insurance with a minimum cover of GBP 2 million per incident or the equivalent

Appendix 1

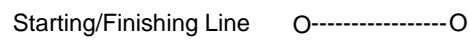
Course 1

Start – 1 – 2 - 3P/3S – 1 – 2 - 3P/3S – Finish



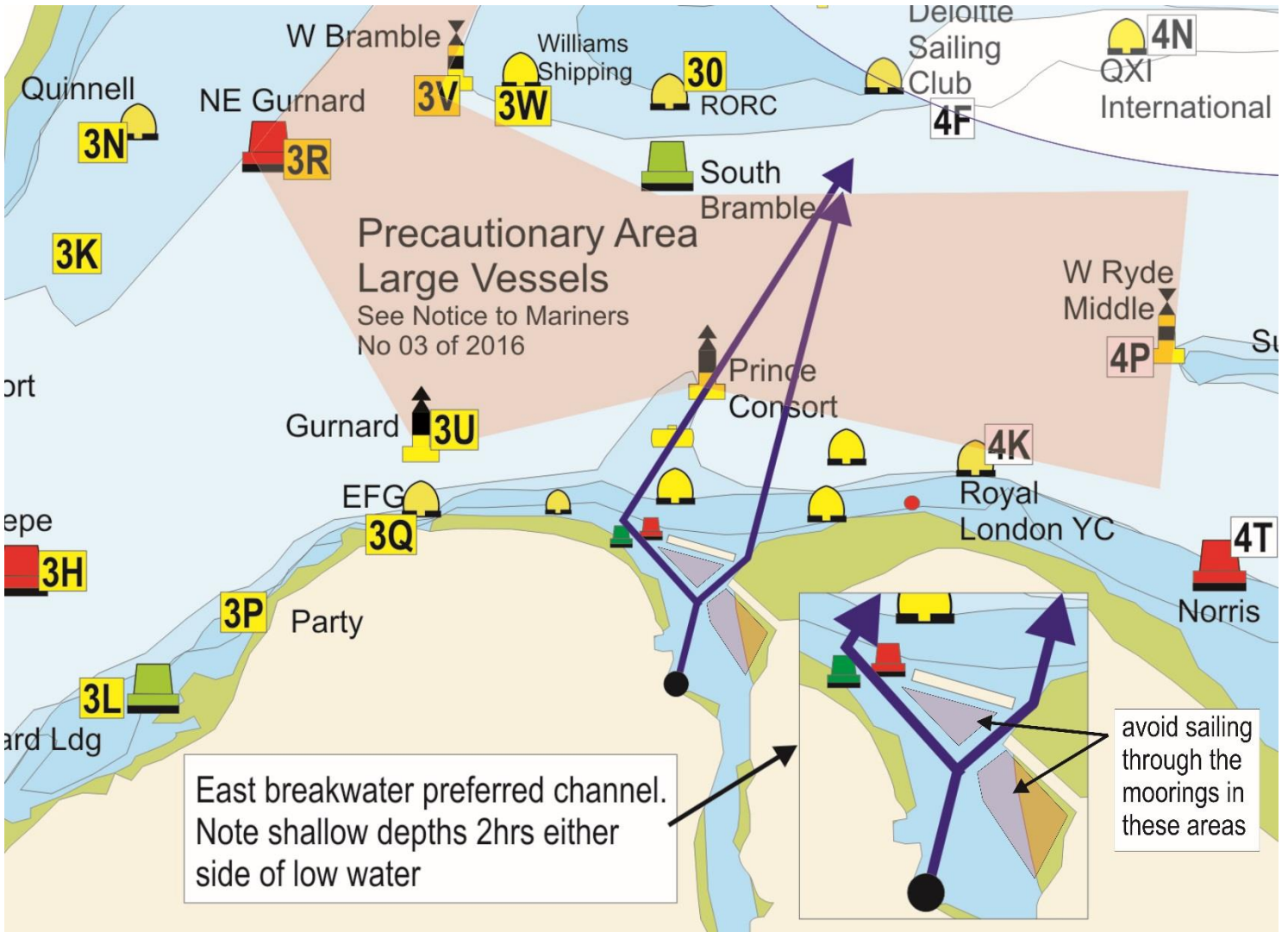
Course 2

Start – 1 – 2 – 3P/3S – 1 – 2 – Finish

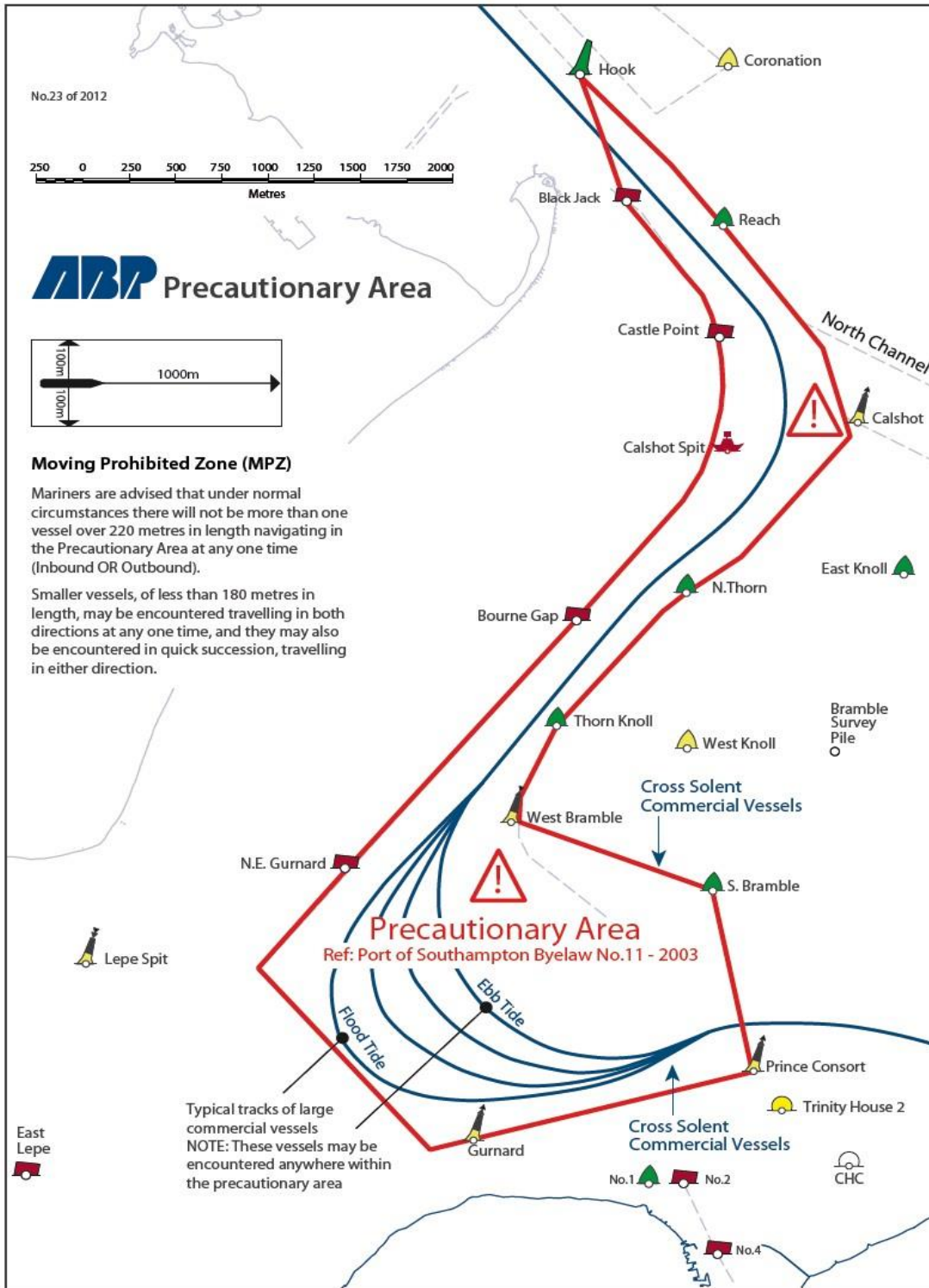


Appendix 2

Cowes Harbour chart



Appendix 3



We are extremely grateful to all our sponsors and supporters
for their contribution to the Etchells Europeans



LionTree



RED FUNNEL



zhik



winning tides

